

USB driver installation

Use the installation executable.

For windows XP & 2000 use:

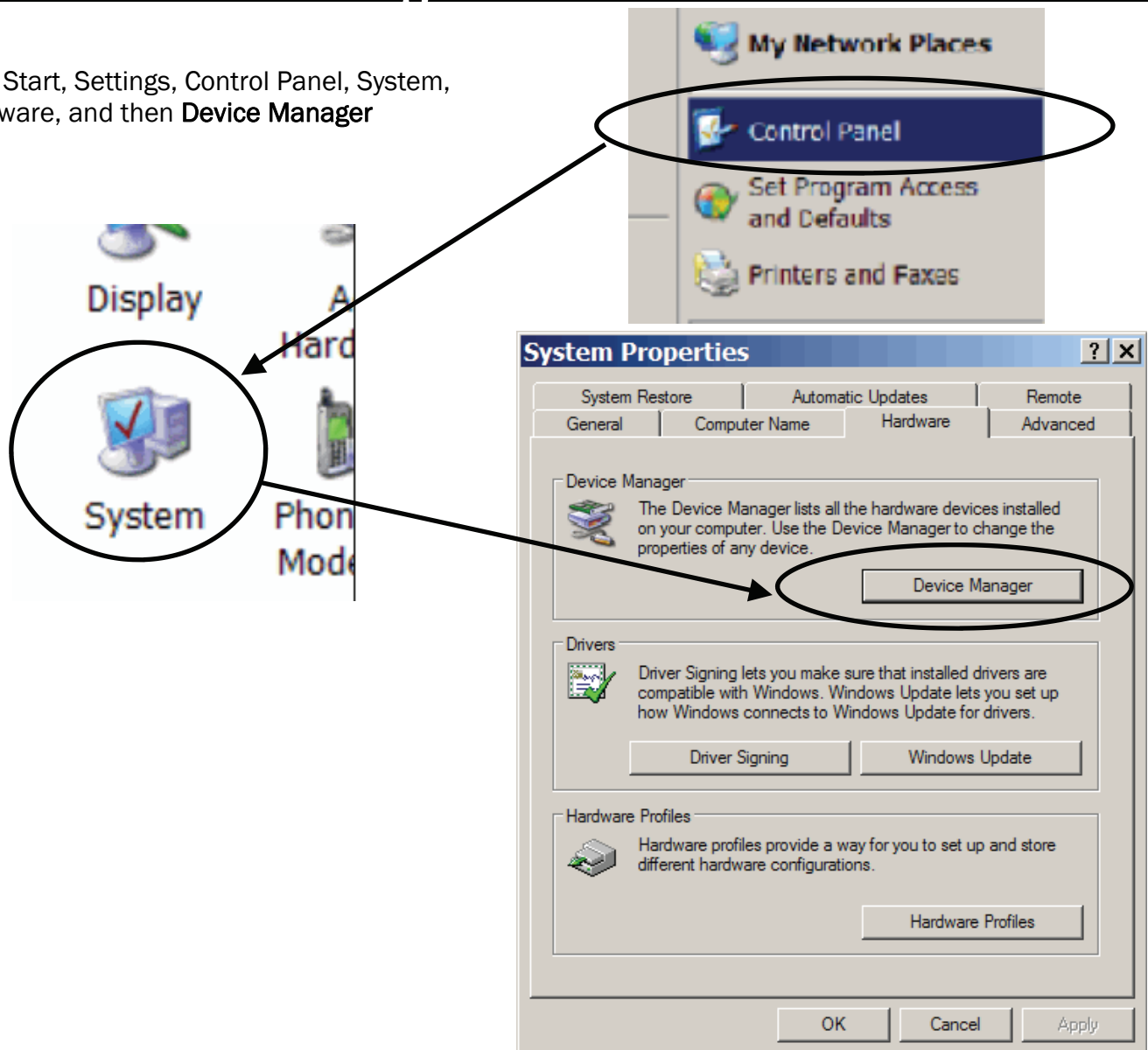
USB_drivers_setup.exe

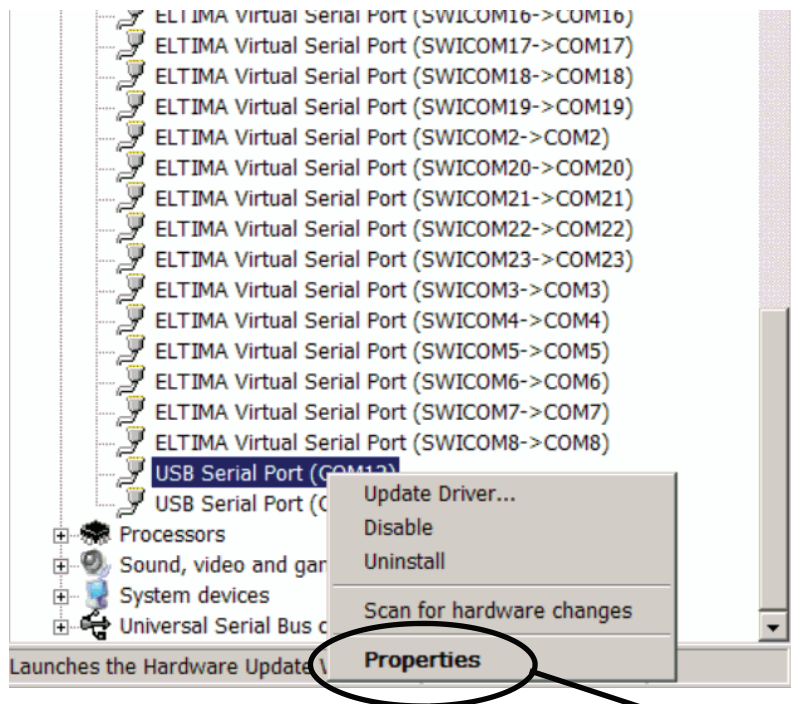
For windows XPx64 use:

USB_drivers_x64_setup.exe

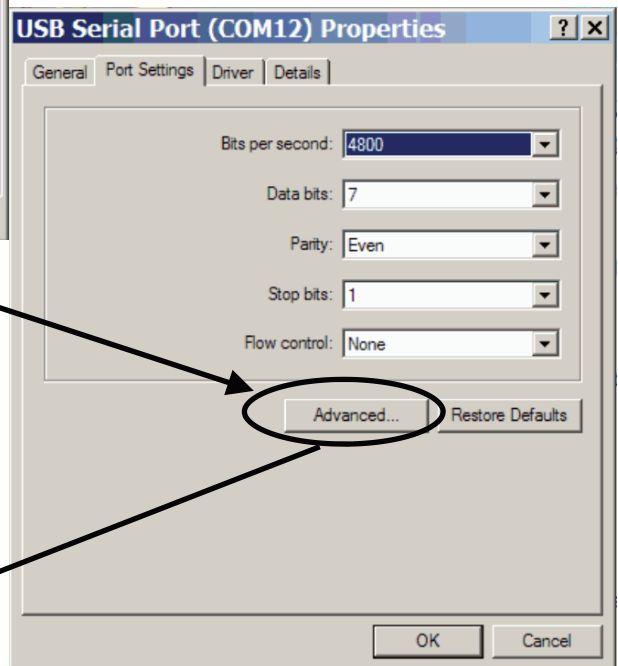
Virtual Com Port setting

Click Start, Settings, Control Panel, System,
Hardware, and then **Device Manager**





Click on the new **USB Serial Port**.
Click on the **Port Settings** tab.



Click on Advanced. In most cases the wizard will have installed your new **USB Serial Port** as COM3 or COM4

Once you have configured a **COM port number** for your new USB Serial Port, make sure that you use this same COM port selection in your communication

